

Some folks like to Getaway

A New York State of mind and only a couple of short, scenic gallons of gas away

WARWICK, NY

By Paul Clark



People are the first thing you notice in Warwick. Families talking and walking along Market and Railroad Streets. They're riding bikes and ambling along the railroad tracks near the Farmers' Market on South Street, fishing poles in hand, toward the annual Duck Derby on the Wawayanda Creek.

People are out and about in Warwick—a "real" town, as one resident happily described it, whose tree-lined streets, vintage homes, buildings and unfrenetically busy town center reflect the gracious look and feel of another age. Perhaps, in part, because Warwick has been a well-established community since early colonial times.

But mostly, it's because the people of Warwick—and those in the surrounding farms, orchards and vineyards – by working cooperatively as a community over the years, citizens, farmers, government and others have been able to maintain and preserve a special quality—and continuity—of life so many other communities have lost to malls, sprawl and over-franchised landscapes.

Nearly 25 years ago, Warwick deliberately established a state and federally designated historic district to preserve over 200 pre-20th century public and private structures. The same structures that

Theatre Company attracts the talents of local actors and stagehands whose productions include the regionally renowned "Shakespeare in the Orchard,".

But to fully appreciate all that Warwick has accomplished, you need only get out and about with the people, too. And it's only a couple of short, scenic gallons of gas away. Here are a few suggestions to help you experience Warwick for yourself.

Markets and Antiques

Warwick Valley Farmers' Market

Every Sunday through October, 9 am - 2 pm
South Street parking lot in downtown Warwick
The weekly Farmers Market is the most direct and delightful way to find, taste and savor the beauty and bounty of the Warwick Valley—all in one lively place. With local musicians playing in the background, you can stroll from stand to stand, mingling and talking with local farmers, growers, winemakers, beekeepers, organic farmers and others. There's lots to buy and take home—fresh fruits, just-picked tomatoes and vegetables, fragrant flowers and plantings, herbs, homemade cheese, wine and other great things.

People are out and about in Warwick— where enchantment has been preserved.

now house many of Warwick's restaurants, cafes, clothing stores and galleries. There's a noticeable absence of anything resembling a chain store here. And no one seems to mind.

That same level of cooperation has also preserved the past—and secured the future—of family-owned and operated farms in the Warwick Valley. Bellvale Farms, a 150-year-old dairy farm owned by Al and Judy Buckbee—the ninth generation of Buckbees to live and work there—is a good example. Bellvale was among the first to sell its property development rights to the Warwick's farmland preservation program.

By retaining ownership of the land on which the farm is located, but selling the rights to develop it to the preservation program, the Buckbees were able to purchase more land and livestock to expand and diversify their dairy business. At the same time, by buying the development rights from the Buckbees, the program was able to ensure that the 450-acre Bellvale Farms would remain a sustainable, family-owned farm for their children and grandchildren—the 10th and 11th generations of Buckbees—and not turned into a sea of condominiums some day. It also ensured that Bellvale Farms would continue its role as an important part of Warwick's rural economy, and of Orange County's rich agricultural heritage.

Warwick has also attracted artists, designers, craftsmen, musicians, philosophers and others from all over the globe, and right next door. Frederick Franck, the renowned Dutch-born sculptor, painter and author, lived and worked at Pacem in Terris (Peace on Earth), his Warwick compound—now a beautiful outdoor museum—on Covered Bridge Rd. At Charavogne Barn, part of a 13-acre center built for the Gurdjieffians, where followers of G.I. Gurdjieff, an Armenian-born spiritual figure, meet regularly to study his teachings of reflection and life fulfillment. And the Illustrious





Iriniri Designs - Galleries of Jewelry and Fine Crafts 20 Main Street / 845-986-0881

All that glitters in Iriniri Designs is not only gold, but also silver, exotic stones and nearly every other kind of dazzling material that can be fashioned into highly captivating and original jewelry, art, gifts and crafts. Stop in and meet Iriniri's internationally established co-owners Nirit Rechtman and Irit Goldman. They'll be happy to show you items created by Warwick area artists, and artists from all over the world. For any reason and every occasion, Iriniri has the right item for you, your spouse or anyone else deserving of something truly unique and imaginative. iriniri@warwick.net.

Eclectic Eye / Garage at the Eclectic Eye

16-18 Railroad Avenue / 845-986-5520

The instant you walk in the door, you'll know how and why this local antiques landmark got its name. Comprised of space divided among five equally eclectic vendors, this is the perfect place to wander down aisles overflowing with art, clocks, lighting, rugs, and other vintage Victorian, 18th and 19th century splendor. George Laurence, the Eclectic Eye's founder, is a serious collector and well-regarded expert on mid-20th century pottery, particularly the beautiful Glidden pottery of the '40s and '50s. Jenna Field, another Warwick resident and vendor, specializes in Asian antiques and reproductions ranging from exotic and ornate home furnishings, and simple everyday accessories and gifts. Jenna is also very active in the local arts and culture scene. She's on the board of the Illustrious Theatre Company. For more information, visit theeclectic-eye.com, warwickinfo.net/jenna and theillustrioustheatre.org.

Orchards and Farm Markets

Ochs Orchard Reservoir Road off Route 94 / 845-986-1591

Can't wait until September to start picking apples? Head to Ochs for an afternoon of beautiful scenery and rustic fun picking other healthy summer crops as they come in, like fresh tomatoes and strawberries. Call first to find out what's ready for picking.

Maskers Fruit Farm Ball Rd. off Rte. 17A / 845-986-1058

With 20,000 apple trees on this 200-acre orchard, you'll find a full day of fun at Maskers. Bring a picnic lunch and enjoy the spectacular views of the Warwick Valley. Open late August through October. www.maskers.com

Pennings Orchard and Farm Market

169 South Route 94 / 845-986-7080

Nearly 20 different types of apples to pick over the course of the season—late Aug./Sept. –Oct. Kids will love the petting barnyard and gardeners will love the nursery. www.penningsorchards.com.

Applewood Orchards

82 Four Corners Road / 845-986-1684

In addition to apple and pumpkin picking, Applewood also has herb and rose gardens, a duck pond and horses, rabbits and sheep for kids to pet. Music, hayrides and puppet shows add a nice festive atmosphere. Orchards are open September 8th through late October. www.applewoodorchards.com.

Winery Tours and Tastings

Applewood Winery 82 Four Corners Rd. / 845-986-1684

Enjoy an afternoon visit to Applewood Winery's tasting room, open Saturdays and Sundays from 11 a.m. to 5 p.m. Tastings are \$3 per person and there are over a dozen fine, "limited edition" wines to sample. For more information about tastings and events, visit www.applewoodwinery.com.



The Eclectic Eye

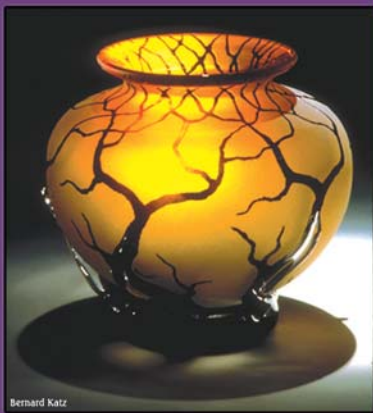
On historic Railroad Ave. you'll find the Hudson Valley's finest array of Antiques, Asian, Modern, Oak, & Pottery in two fabulous shops.

Who's On First

Warwick, NY 845-986-5520

IRINIRI

Galleries of Jewelry & Fine Crafts



Bernard Katz



Warwick, NY
20 Main Street
845-986-0881



Bezack

Nyack, NY
98 Main Street
845-353-4245

Art Glass Jewelry Judaica Pottery

Demarest Hill Winery and Distillery

81 Pine Island Turnpike Warwick / 845-986-4723

Warwick's largest winery produces over 50 different wines and liqueurs, made and distilled on premises. The pleasant greeting center and tasting room are set atop a hill and the view is striking. Tours and tastings daily. 11 am to 6 pm. www.demaresthillwinery.com.



Dairy Farms & Homemade Ice Cream

Bellvale Farms and Creamery 5 Bellvale Lakes Road (off Route 17A) 845-988-5414 Creamery 845-988-1818

If ever there was a place to prove to kids that milk isn't made by ShopRite, Bellvale Farms is it. Operated by the 9th, 10th and 11th generations of the Buckbee family, the picture-perfect Bellvale Farms has been raising cows and producing milk continuously for over 150 years. Al and Judy Buckbee, their children and grandchildren are on hand at the weekly Sunday Open House to welcome you inside Bellvale's big, white 108-year-old barn, introduce you to calves and cows and demonstrate how cows are milked. Afterwards, stop in at the Creamery for a cup or fresh-baked waffle cone filled with your choice of 20 homemade flavors, all derived from Bellvale Farms cream. In July and August the farms is open every day from 11 am – 6 pm. Tours and milking demonstrations are Sundays at 12:30 pm. www.bellvalefarms.com. Also, learn how the Buckbees have helped preserve and secure the future of safer, more sustainable farming for everyone in the Warwick Valley at www.bellvalefarms.com, and click "In the News."

For complete information—including directions—on Warwick area bed & breakfasts, farmers' markets, orchards, wineries, cafes, restaurants, galleries, entertainment, antiques and other places, attractions and events, visit www.warwickinfo.net.